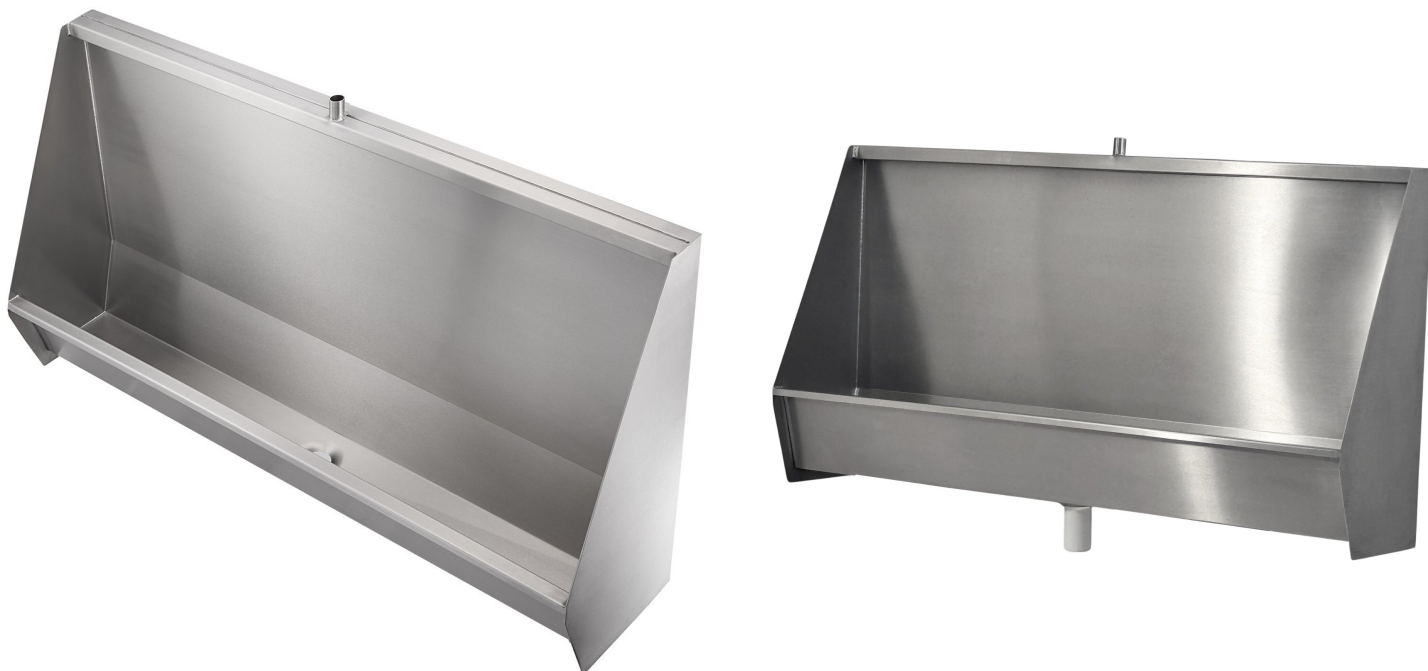


Classic Stainless Steel Wall Hung Urinals 900mm To 2400mm Long



Product Code: WPUC

Classic Stainless Steel Trough Urinals

Product code **WPUC**

This robust and hygienic stainless steel wall-hung trough urinal is designed for high-traffic commercial and public washrooms. Manufactured from high grade 304 stainless steel with a brushed satin finish, it offers durability, easy maintenance, and a clean, modern appearance. Ideal for schools, stadiums, factories, and other commercial settings. This large standard trough urinal ensures ease of use, straight forward installation, and a long service life. Each unit comes pre-drilled for wall mounting and includes all necessary components for simple wall fitting. Sleek modern design suitable for high traffic areas.

With a larger height of 615mm and a projection of 250mm the larger standard urinal is ideal for high traffic areas and for replacement of older larger sized urinals.

- 615mm increased standard height.
- 251mm projection.
- Grade 304 stainless steel for ease of cleaning and corrosion resistance.
- **6 standard sizes in stock for immediate despatch: 900mm, 1200mm, 1500mm, 1800mm, 2000mm and 2400mm.**
- Centre 38mm plastic dome grated waste fitting for easy fitting to standard waste pipework.
- **White plastic auto cistern** and stainless steel downpipe.
- Cistern and downpipe located centrally above the urinal (exposed).
- Vandal resistant horizontal sparge pipe flushing system.
- Wall mounted installation for easy cleaning and maintenance.
- Manufactured and stocked in the UK.
- **Due to the size and weight of the urinals 1800mm long and above urinals will all be delivered on a pallet. For multiple quantities on 1800mm long and above please contact us for bulk order discount.**

Delivery

- 900mm, 1200mm, 1500mm, 1800mm, 2000mm, 2400mm urinals with centre outlets, top entry sparge pipes in stock for 1 to 2 working days delivery.
- All other sizes, or back entry urinals are made to order please call for lead times.
- **Due to the size and weight of the urinals 1800mm long and above urinals will all be delivered on a pallet. For multiple quantities on 1800mm long and above please contact us for bulk order discount.**

Special Urinals

- Please contact us to order special length trough urinals.
- We can also supply urinals for installation on 2 or 3 walls with joint cover trims.
- Optional back entry connection with a concealed cistern and downpipe (made to order).

Size

- Height: 615mm.
- Projection: 251mm.
- Length as ordered.
- Plastic Cistern: 505mm long x 150mm front to back x 327mm high.
- Stainless Steel Cistern: 503mm long x 190 front to back x 318mm high.
- Downpipe diameter: 22mm external, 20mm internal.

Optional Extras

- Marnic Water Watch flush controller.
- 38mm chrome plated brass waste with stainless steel dome grating.

****All pictures shown are for illustration purpose only and may be subject to change without notice. Actual product may vary due to product enhancement.**
All dimensions shown are for guidance only and may be subject to change or alteration without notice. All items manufactured or purchased separately from a third party to fit our products should be checked against the actual dimensions of the physical product before purchase. We will not be liable for third party costs and consequential loss associated with the items not fitting third party components.**