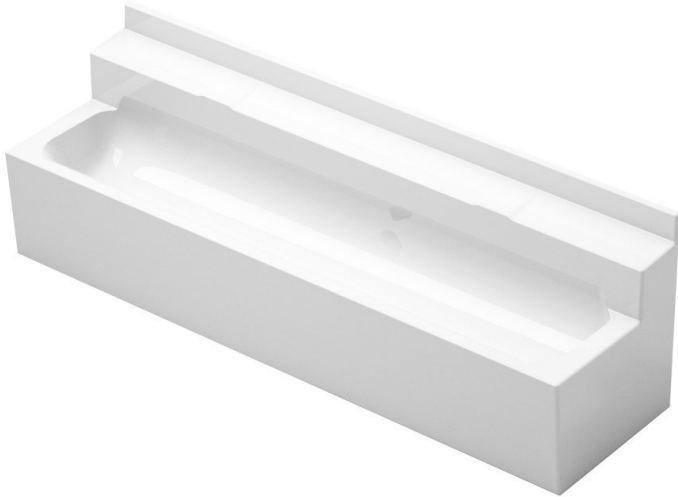


GRP Wall Mounted Wash Trough 1200mm



Product Code: GRP-WT12

GRP Wall Mounted Wash Trough 1200mm

Product Code GRP-WT12

- Fibreglass 1200mm wash trough.
- Gloss white smooth gel surface finish.
- 1200mm long for two users
- Also available in 2100mm long for three users.
- 38mm central plastic dome grated waste fitting.
- Integral wall brackets.
- Tap holes to be added on site by yourself (normal hole saw required).
- The wash trough can be supplied with single or pairs of taps per user, see options.
- Can also be supplied in a range of other RAL colours to special order.

Size

- 1200mm long.
- 395mm front to back.
- 450mm deep overall with taplanding. (140mm deep bowl)

Delivery

- In stock 3 - 5 working days.

Optional Extras

- Taps. Please select from options if required or go to tap section for more choices.
- Plastic or chrome plated trap.
- Stainless steel soap and paper towel dispensers.

****All pictures shown are for illustration purpose only and may be subject to change without notice. Actual product may vary due to product enhancement. All dimensions shown are for guidance only and may be subject to change or alteration without notice. All items manufactured or purchased separately from a third party to fit our products should be checked against the actual dimensions of the physical product before purchase. We will not be liable for third party costs and consequential loss associated with the items not fitting third party components.****