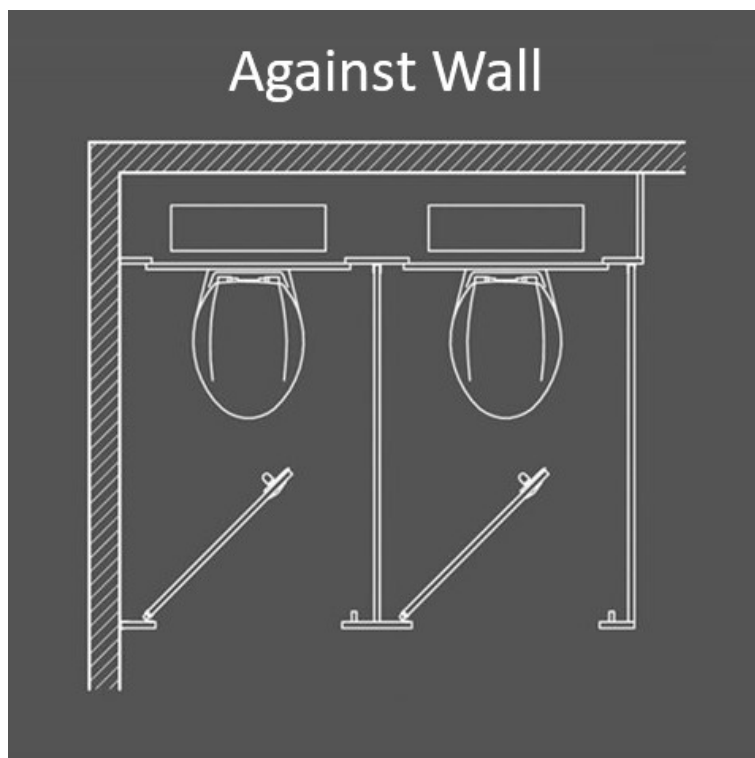
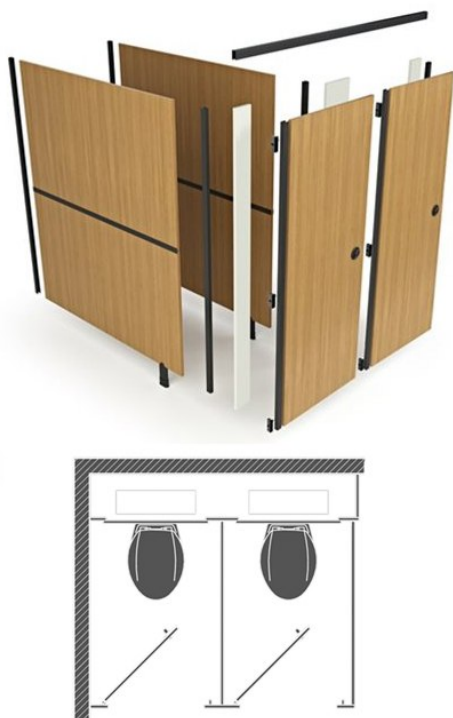


Toilet Cubicles in a Box - Against Walls



Product Code: CUBICLE-AW

Toilet Cubicles in a Box - Against One Side Wall

Product Code CUBICLE-AW

These cubicles are designed to fit up against one side wall and be finished with a side panel at the other end. These can be installed either hand. Maximum width of 1060mm and minimum width of 750mm per cubicle. Available to order online in ranges of up to 8 cubicles. Our toilet cubicle in a box range includes dark grey fixtures and fittings with a choice of 4 colours for partitions and doors. Delivered in standard sizes and clearly labelled the panels and doors can be cut down to size on site and the cut edges are concealed with dark grey continuous channels.

- Cubicles in a box come in standard sizes that can be cut down to fit your required space, all cuts can be concealed in the continuous channels.
- Manufactured from MFC. (Melamine faced chipboard).
- Available in 4 laminate colours as standard, Blue, Light Grey, Dark Grey, Warm Oak, you can mix and match your colours from the doors, pilasters and partitions.
- The Cubicles come complete with all doors, pilasters, partitions and necessary cubicle hardware (screws and wall plugs will not be included).
- Pilasters have a square edge with matching 1mm PVC lipping.
- Fittings supplied in dark grey. Faceplates, hinges, pedestal fee, wall channel and H section.
- Standard toilet cubicle floor clearance is 100mm, standard height is 1950mm (including the floor clearance).
- Doors can be fitted to open inwards or outwards.
- Fast delivery.
- Additional fittings available on request.
- Maximum cubicle width = 1 at 1060mm, 2 at 2120mm, 3 at 3180mm, 4 at 4240mm, 5 at 5300mm, 6 at 6360mm, 7 at 7420mm and 8 at 8480mm.

Size

- Door - 1850mm x 900mm.
- Pilaster - 1850mm x 220mm.
- Partition halves (2 per panel) - 925mm high x 1800mm Deep..

What's Included

- Doors.
- Pilasters.
- Partitions.
- UPVC door cap and wall channels (dark grey).
- Aluminium head rail (dark grey).
- UPVC H Section (dark grey).
- Polycarbonate indicator bolt.
- Outward keep.
- Hinges (dark grey).
- Toilet roll holder (dark grey).
- Coat Hook (dark grey).
- Pedestals (dark grey).
- Screws, plugs and channel through fixings.

- All cubicles should be fitted to meet current building regulations including DocM.
- For example the first cubicle in a washroom should be to ambulant specification.
- For example standard cubicles should have 450mm diameter manoeuvring space between the wc pan and the sweep of the door.
- Installers and building owners are responsible to ensure washrooms meet Document M where necessary. The above are examples and not a full list.

Delivery

- Usually 3 to 5 working days.
- **Delivery will be arranged to your site on a pallet to reduce the risk of damage.**

Options

- Mix and match from 4 colour options.

Disclaimer and Returns

- Toilet cubicles are sold as commercial products to the trade only and will not be subject to returns or cancellations.
- It is the responsibility of the customer to ensure they are purchasing cubicles that will meet the latest building and DocM regulations and Washware Essentials Ltd will not be liable for ensuring the chosen products will meet the individual site regulation requirements.

****All pictures shown are for illustration purpose only and may be subject to change without notice. Actual product may vary due to product enhancement.**

All dimensions shown are for guidance only and may be subject to change or alteration without notice. All items manufactured or purchased separately from a third party to fit our products should be checked against the actual dimensions of the physical product before purchase. We will not be liable for third party costs and consequential loss associated with the items not fitting third party components.**