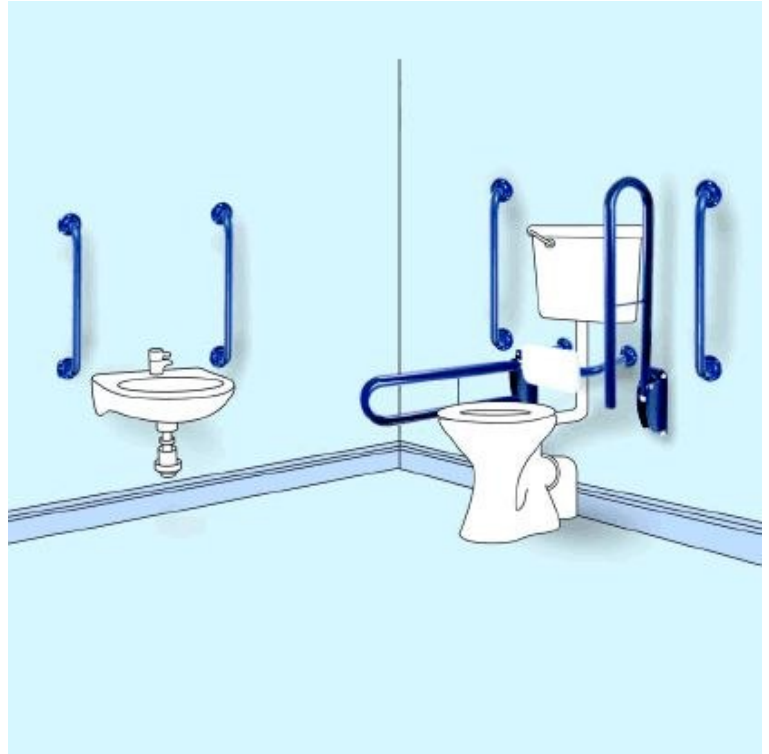


## Stainless Steel Peninsular Grab Rail Pack



Product Code: BTX-PPACK

### Doc M Grab Rail Pack For Peninsular Layout

Product Code PPACK

- Stainless steel 35mm diameter grab rails.
- For a Peninsular style layout where the toilet isn't close to a side wall.
- Fixed flange with 3 fixing holes.
- White or Blue polyester coated, or polished to a mirror or sateen finish.
- Other RAL colours available, please contact us for prices.
- Can be supplied with matching covers to conceal the fixing flanges.

#### Includes

- 2 x 890mm long hinged double rail support arms.
- 1 x 400mm wide by 240mm deep backrest bar.
- 1 x Backrest pad (blue with blue bars, white with all the others).
- 4 x 600mm long grab rails.

#### Delivery

- Delivery is usually within 7 to 10 working days.

#### Options

- Mirror or sateen polished finish, white or blue polyester coated finish.
- Covers to conceal the fixing flanges. Will match the colour or finish of the rails.
- For variations on the above, special colours etc please contact us for prices.

\*\*All pictures shown are for illustration purpose only and may be subject to change without notice. Actual product may vary due to product enhancement.  
All dimensions shown are for guidance only and may be subject to change or alteration without notice. All items manufactured or purchased separately from a third party to fit our products should be checked against the actual dimensions of the physical product before purchase. We will not be liable for third party costs and consequential loss associated with the items not fitting third party components.\*\*