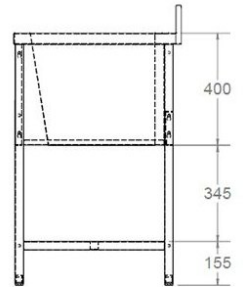
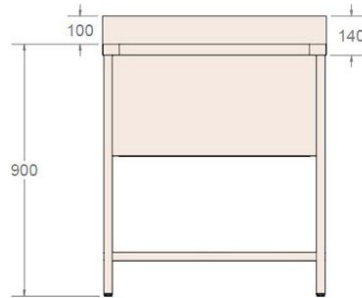
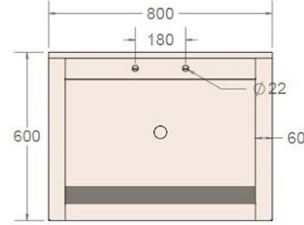


800 x 600 Stainless Steel Utility Sink



Product Code: SSP-US-800

800 x 600 Stainless Steel Utility Sink

Product Code SSP-US-800

- Stainless utility sink bowl and frame.
- Robust 1.2mm thick stainless steel construction.
- 680 x 445 x 400mm deep sink bowl.
- Mounted on stainless steel frame with shelf.
- Complete with 38mm waste with plug.
- Taps available as an optional extra.

Size

- 800mm wide.
- 600mm front to back.
- 900mm high.
- 680 x 445 x 400mm deep sink bowl.

Delivery

- Made to order.

****All pictures shown are for illustration purpose only and may be subject to change without notice. Actual product may vary due to product enhancement.**

All dimensions shown are for guidance only and may be subject to change or alteration without notice. All items manufactured or purchased separately from a third party to fit our products should be checked against the actual dimensions of the physical product before purchase. We will not be liable for third party costs and consequential loss associated with the items not fitting third party components.**