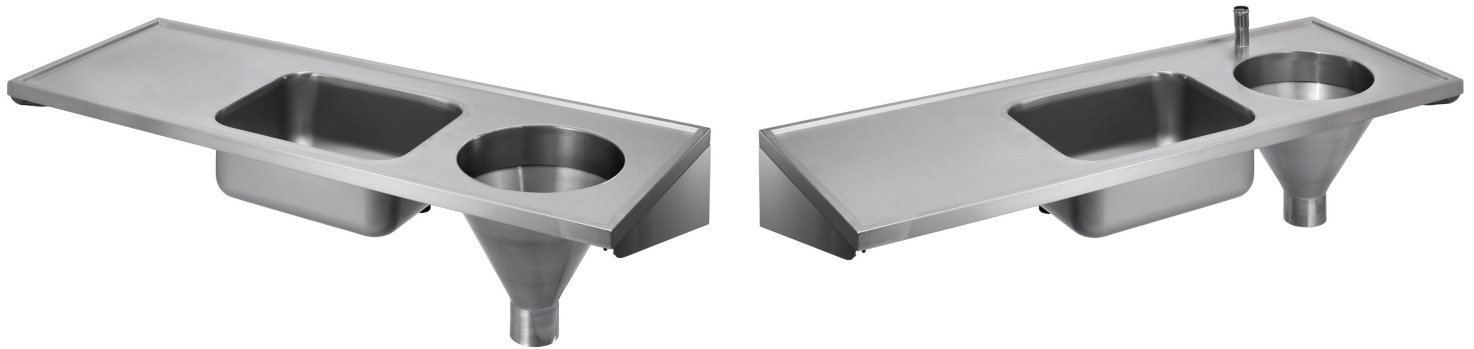


Combined Sluice Sink, Sink Bowl and Drainer



Product Code: DUHS-RH

Combined Slop Hopper With Sink And Drainer - RH

Product Code DUHS-RH

The DUHS stainless steel sluice sink is the ideal choice for environments requiring robust and hygienic waste disposal. Designed with ease of use in mind, this model offers a high-performance solution for clinical, industrial, and healthcare settings. With a right hand flushing sluice disposal bowl, centre sink bowl and left hand drainer the DUHS sluice sink is the perfect all in one unit for sluice rooms. Manufactured with a pressed top to reduce joints and welds for enhanced ease of cleaning, the DUHS Sluice Sink is engineered to withstand frequent use while maintaining high standards of cleanliness and functionality. Its user-friendly design ensures effortless waste management, making it an essential addition to any facility

- Stainless steel wall mounted combined sluice sink (slop hopper) with sink and plain top.
- Complies with the requirements of HBN 00-10 Part C: Sanitaryware Assemblies which replaces the old HTM64 specification.
- DU HS hospital disposal unit.
- Right hand sluice, centre bowl and left hand plain top, [also available with left hand sluice](#).
- Manufactured from grade 304 stainless steel with a satin polish finish.
- The DU HS combined sluice sink is manufactured with an anti drip edge and turn down to all four sides.
- Complete with wall mounting brackets with the option of front support legs.
- Overall size 1600mm x 600mm.
- Available from stock with back entry flushpipe connection for a concealed cistern or top entry for an exposed cistern.
- Top entry models come complete with a stainless steel downpipe.
- Pressed top to reduce welds and joints and aid cleanliness.

Sluice Sink

- Back entry or top entry flushpipe connection (Top entry is extra) Top entry 75mm flush pipe, 70mm for back entry.
- Full flushing rim to ensure efficient and hygienic flushing.
- 110mm plain spigot outlet with the option of white polypropylene P or S traps.

Sink Bowl

- 500mm x 400mm x 200mm stainless steel sink bowl.
- 38mm unslotted flush grated waste fitting, no overflow.
- Supplied as standard with no tap holes, but can be supplied with one central or two tap holes either 22mm, 28mm or 35mm diameter.

Cistern

- The combined sluice sink can be supplied with a stainless steel manual cistern with operating lever or a plastic concealed / exposed cistern and flushpipe with operating lever.

Cistern Dimensions

- Concealed 505mm (W) x 312mm (H) x 150mm (D).
- Exposed 455mm (W) x 318mm (H) x 155mm (D).

Delivery

- From stock standard delivery is usually 3 to 5 working days.

****All pictures shown are for illustration purpose only and may be subject to change without notice. Actual product may vary due to product enhancement.**

All dimensions shown are for guidance only and may be subject to change or alteration without notice. All items manufactured or purchased separately from a third party to fit our products should be checked against the actual dimensions of the physical product before purchase. We will not be liable for third party costs and consequential loss associated with the items not fitting third party components.**