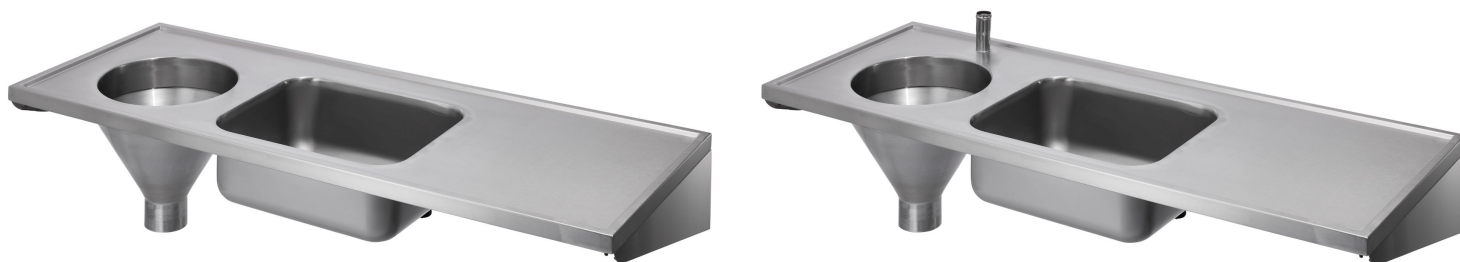


Combined Slop Hopper Sink and Drainer



Product Code: DUHS-LH

Combined Sluice Sink With Sink And Drainer - LH

Product Code DUHS-LH

The DUHS-LH sluice sink is a premium solution designed for high-performance waste disposal in healthcare, clinical, and industrial environments. Featuring a left-hand sluice, a centrally positioned sink bowl, and a right-hand drainer, this model provides a versatile and efficient workspace for managing waste with ease. The stainless steel top is carefully pressed to facilitate quick and thorough cleaning by eliminating corner welds and joints, ensuring high levels of hygiene and durability. Constructed from robust materials, the DUHS sluice sink is built to withstand the demands of frequent use, making it an essential addition to any facility that prioritises cleanliness and efficiency.

- Stainless steel wall mounted combined sluice sink (slop hopper) with sink and plain top.
- Complies with the requirements of HBN 00-10 Part C: Sanitaryware Assemblies which replaces the old HTM64 specification.
- DU HS Hospital disposal unit.
- Left hand sluice, centre bowl, and right hand plain top, [also available with right hand sluice](#).
- Manufactured from grade 304 stainless steel with a satin polish finish.
- The combined slop hopper is manufactured with an anti drip edge and turn down to all four sides.
- Complete with wall mounting brackets with the option of front support legs.
- Overall size 1600mm x 600mm.
- Available from stock with back entry flushpipe connection for a concealed cistern or top entry for an exposed cistern.
- Top entry models come complete with a stainless steel downpipe.

Sluice Sink

- Back entry or top entry flushpipe connection. (Top entry extra) Top entry 75mm flush pipe, 70mm for back entry. .
- Full flushing rim to ensure efficient and hygienic flushing.
- 110mm plain spigot outlet with the option of white polypropylene P or S traps.

Sink Bowl

- 500mm x 400mm x 200mm stainless steel sink bowl.
- 38mm unslotted flush grated waste fitting, no overflow.
- Supplied as standard with no tap holes, but can be supplied with one central or two tap holes either 22mm, 28mm or 35mm diameter.

Cistern

- The combined sluice sink can be supplied with a stainless steel manual cistern with operating lever or a plastic concealed / exposed cistern and flushpipe with operating lever.

Cistern Dimensions

- Concealed 505mm (W) x 312mm (H) x 150mm (D).
- Exposed 455mm (W) x 318mm (H) x 155mm (D).

Delivery

- In stock standard delivery time usually 3 to 5 working days.

****All pictures shown are for illustration purpose only and may be subject to change without notice. Actual product may vary due to product enhancement.**
All dimensions shown are for guidance only and may be subject to change or alteration without notice. All items manufactured or purchased separately from a third party to fit our products should be checked against the actual dimensions of the physical product before purchase. We will not be liable for third party costs and consequential loss associated with the items not fitting third party components.**