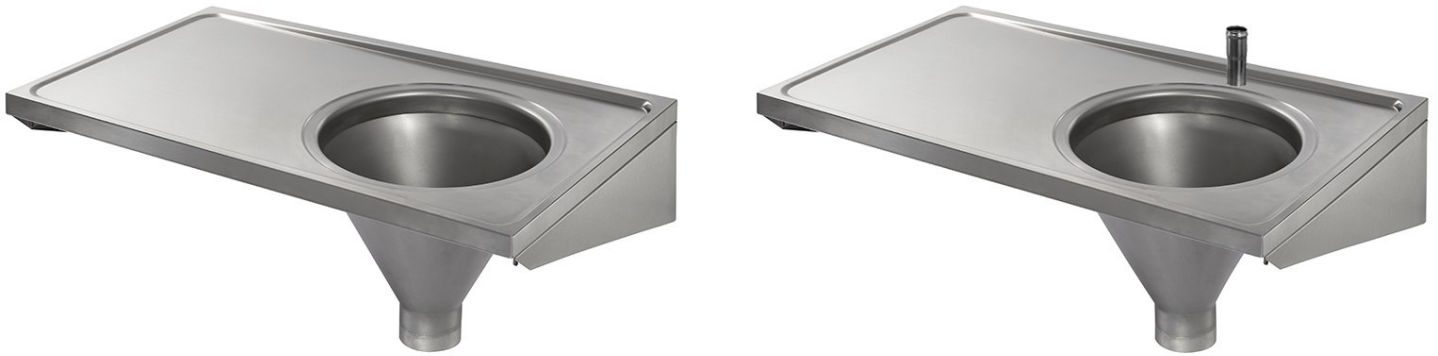


Sluice Sink And Drainer Model DUH



Product Code: DUH

Sluice Sink / Slop Hopper With Drainer

Product Code DUH

- Stainless steel wall mounted sluice sink / slop hopper with drainer.
- Complies with the requirements of HBN 00-10 Part C: Sanitaryware Assemblies which replaces the old HTM64 specification.
- Model DU H disposal unit.
- Right hand sluice / left hand drainer, also available with left hand sluice / right hand drainer.
- Manufactured from grade 304 stainless steel with a satin polish finish.
- The sluice sink is manufactured with an anti drip edge and turn down to all four sides.
- Complete with wall mounting brackets with the option of front support legs.
- Overall size 1000mm x 600mm.
- Available with back or top entry flushpipe connection (price is £60 extra for top entry) Top entry 75mm flush pipe, 70mm for back entry.
- Top entry models include a stainless steel flushpipe.
- Full flushing rim to ensure efficient and hygienic flushing.
- 110mm plain spigot outlet with the option of white polypropylene P or S trap.
- Monobloc 2 lever hot and cold mixer tap can be added to the left or right hand side of the sluice sink. **(please note this cannot be used with a grid)**

Cistern

- The wall mounted sluice sink and drainer can be supplied with a stainless steel manual cistern with operating lever or a plastic concealed / exposed cistern and flushpipe with operating lever.

Cistern Dimensions

- Concealed 505mm (W) x 285mm (H) x 146mm (D).
- Exposed 455mm (W) x 318mm (H) x 155mm (D).

Delivery

- From stock usually 3 to 5 working days.

**All pictures shown are for illustration purpose only and may be subject to change without notice. Actual product may vary due to product enhancement.
All dimensions shown are for guidance only and may be subject to change or alteration without notice. All items manufactured or purchased separately from a third party to fit our products should be checked against the actual dimensions of the physical product before purchase. We will not be liable for third party costs and consequential loss associated with the items not fitting third party components.**